

# Machine Self-Reference And The Theater Of Consciousness

John Case

Department of Computer and  
Information Sciences  
University of Delaware  
Newark, DE 19716 USA  
Email: [case@cis.udel.edu](mailto:case@cis.udel.edu)  
<http://www.cis.udel.edu/~case>

## Outline:

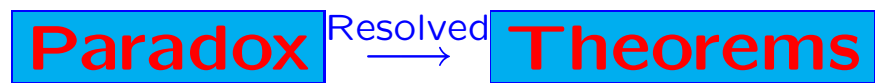
- Brief history of linguistic self-reference in mathematical logic.
- Meaning, achievement & applications of machine self-reference.
- Self-modeling/self-reflection: segue from machine case to the human reflective component of consciousness (other aspects of the complex phenomenon of consciousness, e.g., awareness and qualia, are not treated).
- What use is self-modeling/reference? Lessons from machine cases. Summary and What the Brain Scientist Should Look For!

**Background:**  
**Self-Referential**  
**Paradoxes of LANGUAGE**

Epimenedes' Liar Paradox  
(7th Century BC)

Modern Form:  
"This sentence is false."

## Mathematical Logic (1930's+):



## Examples:

Gödel (1931) & Tarski (1933)

Liar Paradox  $\xrightarrow{\text{Resolved}}$  Suitable Mathematical Systems cannot express their own truth.

Gödel (1931)

Liar Paradox  $\xrightarrow{\text{Transformed}}$

“This sentence is not provable”  $\xrightarrow{\text{Resolved}}$  Suitable Mathematical Systems with Algorithmically Decidable Sets of Axioms are Incomplete (have unprovable truths).

## **An Essence of These Arguments:**

**Sentences** which assert something about themselves

“ ... blah blah blah ... about **self.**”

This talk is about **self-referential** (syn: self-reflecting) **MACHINES** (Kleene 1936) — not sentences.

While self-referential sentences **assert** something about themselves, self-referential machines **compute** something about themselves.

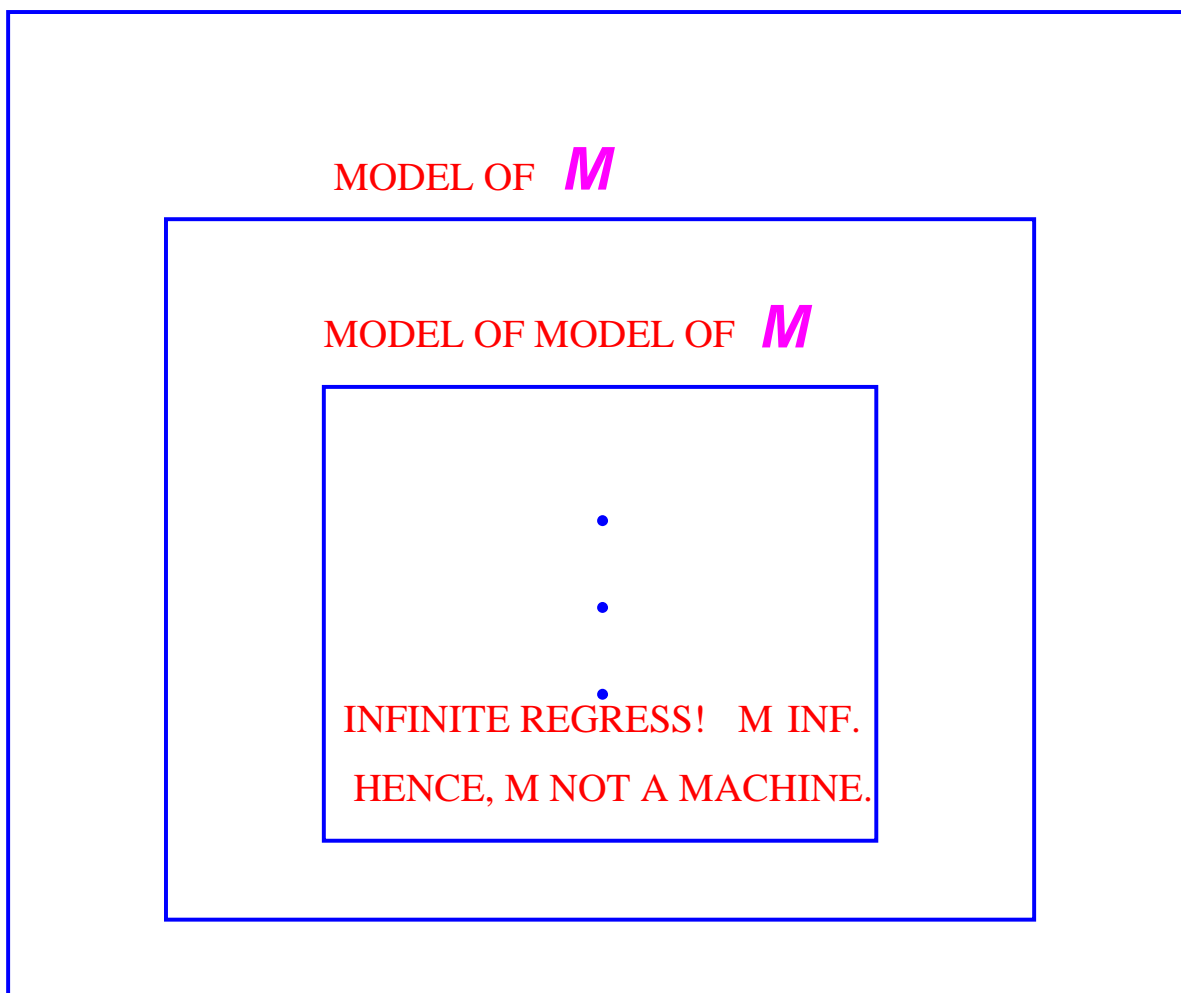
## Problem

**Can** machines take their **entire** internal mechanism into account as data? Can they **have** “complete self-knowledge” **and use it** in their decisions and computations?

We need to make sure there is **not** some **inherent** paradox in this — Not a problem in the linguistic case.

1. CAN MACHINES CONTAIN A COMPLETE MODEL OF THEMSELVES?

*M*



THEREFORE, M CANNOT CONTAIN A MODEL OF ITSELF!



So —

2. Can machines **create a model of themselves — external to themselves?**

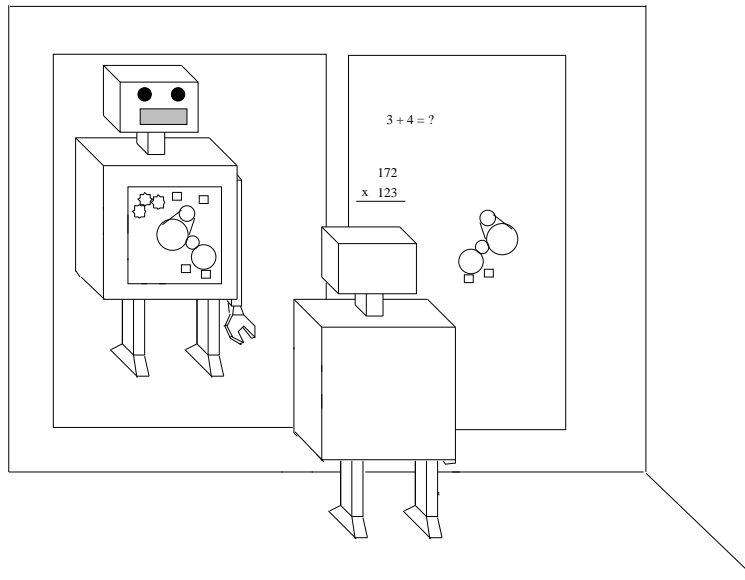
**YES!** — by:

a. Self-Replication or

b. Mirrors.

We're gonna do it with mirrors!

— No smoke, just mirrors.



The robot has a **transparent** front so its internal mechanism/program is visible. It faces a **mirror** and a writing board, the latter for “calculations.”

It is shown having copied already a portion of its internal mechanism/program, corrected for mirror reversal, onto the board. It will copy the rest.

Then it can do **anything preassigned and algorithmic** with its board data consisting of: its **complete** (low-level) self-model **and** any other data.

The above depicts **Kleene's Strong Recursion Theorem (1936)** [Cas94,RC94]:

Fix a standard formalism for computing all the (partial) computable functions mapping tuples from  $\mathbb{N}$  (the set of non-negative integers) into  $\mathbb{N}$ . Numerically name/code the programs/machines in this formalism onto  $\mathbb{N}$ . Let  $\varphi_p(\cdot, \dots, \cdot)$  be the (partial) function (of the indicated number of arguments) computed by program number  $p$  in the formalism.

## Kleene's Theorem

$$(\forall p)(\exists e)(\forall x)[\varphi_e(x) = \varphi_p(e, x)].$$

$p$  plays role of an arbitrary preassigned use to make of self-model.  $e$  is a self-knowing program/machine corresponding to  $p$ .  $x$  is any input to  $e$ . Basically,  $e$  on  $x$ , creates a self-copy (by a mirror or by replicating like a bacterium) and, then, runs  $p$  on (the self-copy,  $x$ ).

In any natural programming system with efficient (linear time) numerical naming/coding of programs, passing from any  $p$  to a corresponding  $e$  can be done in linear time; furthermore,  $e$  itself efficiently runs in time  $\mathcal{O}(\text{the length of } p \text{ in bits} + \text{the run time of } p)$  [RC94].

Following provides a program  $e$  which, shown any input  $x$ , decides whether  $x$  is a (perfect) self-copy.

### Proposition

$$(\exists e)(\forall x)[\varphi_e(x) = \begin{cases} 1, & \text{if } x = e; \\ 0, & \text{if } x \neq e \end{cases}].$$

### Proof.

$e$  on  $x$  creates a self-copy and, then, compares  $x$  to the self-copy, outputting 1 if they match, 0 if not.  $p$  here is **implicit**; it's the use **just described** that  $e$  makes of its self-copy.

□

## Some Points:

- a. There are not-so-natural programming systems **without** Kleene's Theorem but which suffice for computing **all** the partial computable functions (mapping tuples from  $\mathbb{N}$  into  $\mathbb{N}$ ).
- b. Self-simulation can be practical, e.g., a recent **Science** article [BZL06] reports experiments showing that **self-modeling in robots** enables them to compensate for injuries to their locomotive functions.
- c. Next slide provides a **succinct, game-theoretic** application of machine self-reference which shows a result about program **succinctness**.

Let  $s(p) \stackrel{\text{def}}{=} \lceil \log_2(p + 1) \rceil$ , the size of program/machine number  $p$  in bits.

**Proposition** Let  $H$  be any (possibly horrendous) computable function (e.g.,  $H(x) = 100^{100} + 2^{2^{2^x}}$ ). Then

$$(\exists e)(\exists D, \text{ a finite set } \mid \varphi_e = C_D)[\lvert D \rvert > H(s(e))].$$

Intuitively,  $e$  does **not** decide  $D$  by table look-up since a table for the huge  $D$  would not fit in the  $H$ -smaller  $e$ .

**Proof.**

By Kleene's Theorem,

$$(\exists e)[\varphi_e = C_{\{x \mid x \leq H(s(e))\}}].$$

Let  $D = \{x \mid x \leq H(s(e))\}$ . Clearly,  $\lvert D \rvert = H(s(e)) + 1 > H(s(e))$ .

□

In a two move, two player game, think of (a program for)  $H$  as the move of player 1 and  $e$  as the move of player 2. Player 2's goal is to have the proposition be true; 1's is the opposite. Player 2's strategy involves  $e$ 's using self-knowledge (and knowledge of  $H$ ) to compute  $H(s(e))$  and make sure it says Yes to a **finite** number of inputs which number is (one) more than  $H(s(e))$ .

## Levels of Self-Modeling?

The complete wiring diagram of a machine provides a **low-level** self-model.

Other, **higher-level** kinds of self-modeling are of interest, e.g., **general descriptions of behavioral propensities**.

A nice **inhuman** example (provided by a machine) is: **I compute a strictly increasing mathematical function**.

A **human** example is: **I'm grumpy, upon arising, 85% of the time**.

For machines, which we likely are [Jac90,Cas99\*], such higher-level self-knowledge may be proved from some powerful, correct mathematical theory **provided the theory has access to the complete low-level self-model**. Hence, the complete, low-level self-model is more basic.

\*The expected behaviors in a discrete, quantum mechanical world with computable probability distributions are computable!

## Human Thoughts and Feelings

We take the point of view that conscious human thought and feeling **inherently** involve (attenuated) **sensing-perceiving** in any one of the sensory modalities. E.g.,

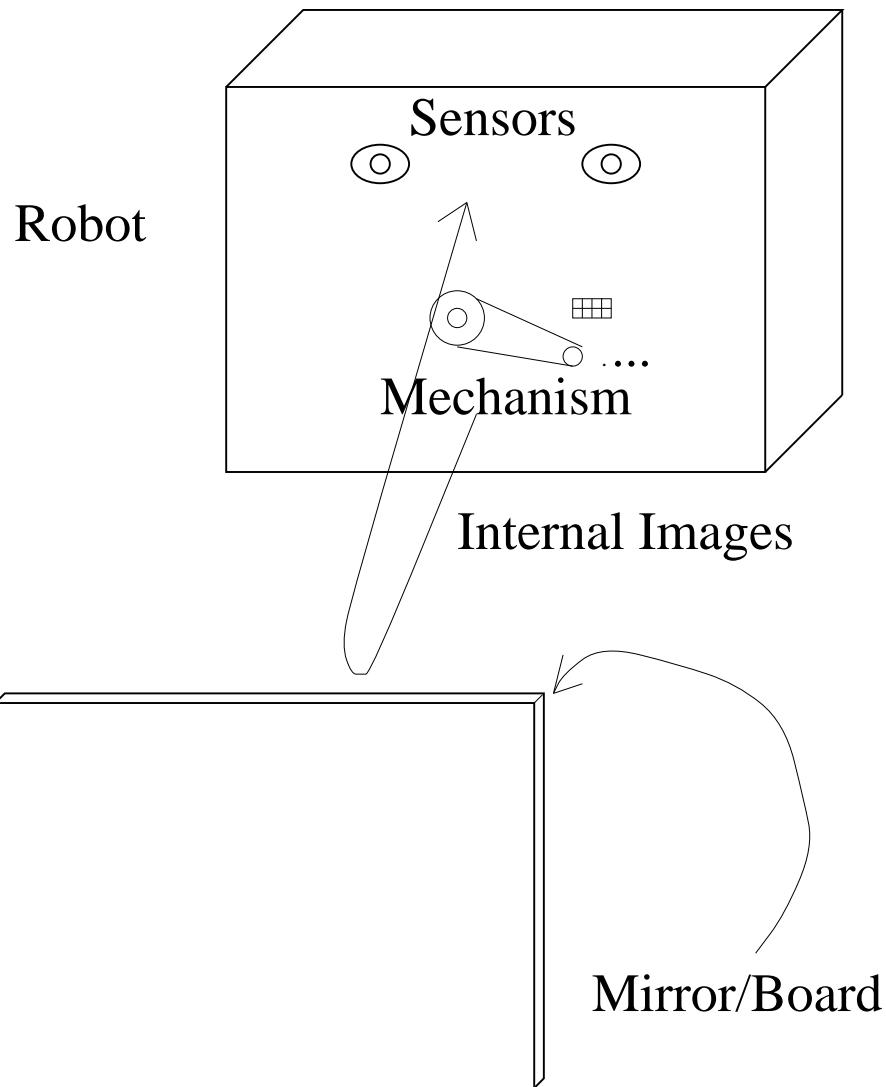
- a. Vocal tract “kinesthetic” [Wat70] and/or auditory perceiving for inner speech.
- b. There is important sharing of brain machinery between **vision** and production and manipulation of **mental images**. Many ingenious experiments show that the same unusual **perceptual** effects occur with both real images **and imagined ones** [Jam90,FS77,Fin80,She78,Kos83,KPF99].

In the following we will exploit for exposition the **visual** modality since it admits of pictorially, metaphorically representing the other modalities: inner speech, feelings, . . . .

Generally the only aspects of our inner cognitive mechanism and structure we humans can know by consciousness are by such means as: detecting our own inner speech, our own somatic and visceral concomitants of emotions, our own mental images, . . . .



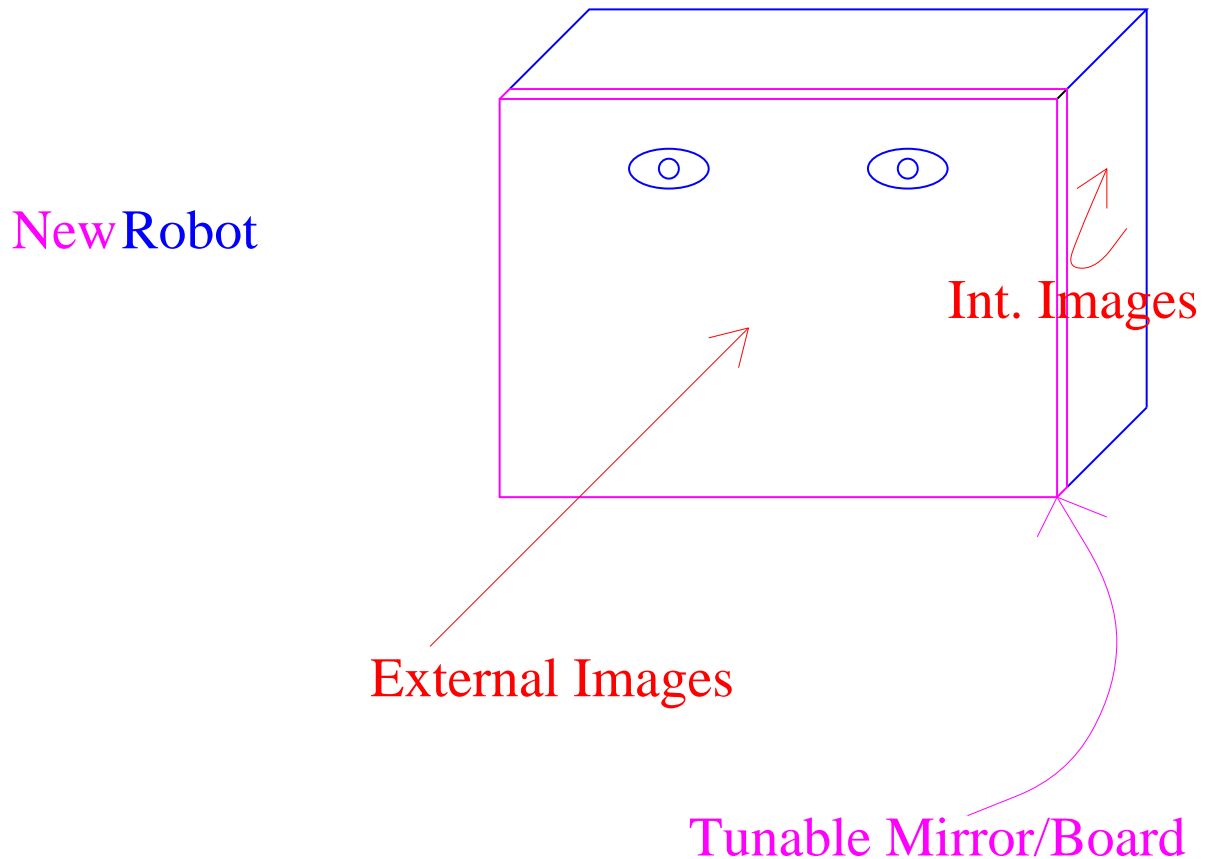
# The Robot Revisited



Now, make the mirror/board **tunable**, e.g., as to its degree of “silvering,” the degree to which it lets light through vs. reflects it.

## The Robot Modified

Attach, then, the tunable mirror/board to the transparent **and sensory-perceiving** front of the robot to obtain the new robot:



The new robot controls how much it looks at externally generated data and how much it looks at internally generated data, e.g, images of its own mechanism.\*

The **attached**, tunable mirror/board is now part of the new robot.

\* For humans 'external' means roughly 'external to the brain', e.g., for affect, the concomitant felt somatic and visceral sensations-perceptions are from the body.

## More About The Human Case

The robot's tunable mirror/board is analogous to the human sensory-perceptual "surface." The latter is also tunable as to how much it attends to internal "images" and how much it attends to external (external to brain, not body).

However, we humans can only "see" the part of our internal cognitive structure originally built from sense-percept data and sent back to our sensory-perceiving surface to be re-experienced as modified and, typically, attenuated, further sense-percept data. We don't see our own neural net, synaptic chemistry, etc. **This is not surprising since we likely evolved from sensing-perceiving-only organisms.**

I recommend that brain scientists locate in the human brain a **functional decomposition** corresponding to the elements of our modified robot with tunable mirror/sensory-perceiving surface!

## Lessons Of Machine Case?

From Kleene's Recursion Theorem (eventually) came our modified robot with attached, tunable mirror/board.

In applications of Kleene's Recursion Theorem [Cas94,RC94] (within Computability Theory) we see that, while is it **not** needed to compute all that is computable,

- a. It provides very **succinct** proofs and program constructs [RC94].
- b. As we saw, from a **game-theoretic** viewpoint, in some cases, a (machine) player's **self-knowledge** is an important component of its winning strategy [Cas94].

Quite possibly, then, our own, less complete, human version of self-reflection evolved thanks to a premium on compact (i.e., succinct) brains and the need to win survival games. Emotions and reflection on them useful to survival too. **Of course, self-simulations and simulations of variants of self can be useful.**

## Summary

Kleene's Strong Recursion Theorem provides for non-paradoxical self-referential **machines/programs**.

**In effect**, such a machine/program **externally projects** onto a **mirror** a complete, low level model of itself (i.e., wiring diagram, flowchart, program text, ...).

We modified this machine self-reference to produce an idealization of the self-modeling component of human consciousness by attaching the mirror to the "sensory-perceiving surface."

The analog of the mirror above is the human sensory-perceptual "surface," **tunable** as to its degree of "silvering!"

Brain scientists should look for a **Functional Decomposition Corresponding to Our Model**.

From applications of Kleene's Theorem in Computability Theory: complete machine self-modeling aids with machine/program **succinctness** and with winning **games**. Perhaps the **uses of human reflective thought** are similar: need to have a compact brain and to win survival games. Emotions and reflection on them useful to survival too. **Simulations of self and variants is clearly useful**.

## References

- [BZL06] J. Bongard, V. Zykov, and H. Lipson. Resilient machines through continuous self-modeling. *Science*, 314:1118–1121, 2006.
- [Cas94] J. Case. Infinitary self-reference in learning theory. *Journal of Experimental and Theoretical Artificial Intelligence*, 6:3–16, 1994.
- [Cas99] J. Case. The power of vacillation in language learning. *SIAM Journal on Computing*, 28:1941–1969, 1999.
- [Fin80] R. A. Finke. Levels of equivalence in imagery and perception. *Psychological Review*, 87:113–139, 1980.
- [FS77] R. A. Finke and M. J. Schmidt. Orientation-specific color after-effects following imagination. *Journal of Experimental Psychology: Human Perception and Performance*, 3:599–606, 1977.
- [Jac90] R. Jackendoff. *Consciousness and the Computational Mind*. Bradford Books, 1990.
- [Jam90] W. James. *Principles of Psychology*, volume II. Henry Holt & Company, 1890. Reprinted, Dover, 1950.
- [Kin82] M. Kinsbourne. Hemispheric specialization and the growth of human understanding. *American Psychologist*, 35:411–420, 1982.
- [Kos83] S. Kosslyn. *Ghosts in the Mind’s Machine: Creating and Using Images in the Brain*. Harvard Univ. Press, Cambridge, Massachusetts, 1983.
- [KPF99] S. Kosslyn, A. Pascual-Leone, O. Felician, S. Camposano, J. Keenan, W. Thompson, G. Ganis, K. Kukel, and N. Alpert. The role of area 17 in visual imagery: Convergent evidence from PET and rTMS. *Science*, 284:167–170, 1999.
- [RC94] J. Royer and J. Case. *Subrecursive Programming Systems: Complexity and Succinctness*. Research monograph in *Progress in Theoretical Computer Science*. Birkhäuser Boston, 1994.
- [She78] R. N. Shepard. The mental image. *American Psychologist*, 33:123–137, 1978.
- [Wat70] J. Watson. *Behaviorism*. W.W. Norton, 1970.

Schmidhuber, J.: Gödel machines: self-referential universal problem solvers making provably optimal self-improvements. Technical Report IDSIA-19-03, arXiv:cs.LO/0309048, IDSIA, Manno-Lugano, Switzerland (2003)Google Scholar. 44. Schmidhuber, J.: Gödel machine home page, with frequently asked questions (2004), <http://www.idsia.ch/~juergen/goedelmaschine.html>. 45. Schmidhuber, J.: Gödel machines: Fully self-referential optimal universal self-improvers. In: Goertzel, B., Pennachin, C. (eds.) Cite this paper as: Schmidhuber J. (2005) Gödel Machines: Towards a Technical Justification of Consciousness. In: Kudenko D., Kazakov D., Alonso E. (eds) Adaptive Agents and Multi-Agent Systems II. AAMAS 2004, AAMAS 2003. Definition of consciousness. Human beings possess the most wonderful of all gifts—reason with its keen insight into the remote past and the future, its penetration into the sphere of the unknown, its world of dreams and fantasy, creative solutions to practical and theoretical problems and the realisation of the most daring plans. As the highest level of human mental activity, consciousness is one of the basic concepts of philosophy, psychology and sociology. The unique nature of this activity lies in the fact that the reflection of reality, and its constructive-creative transformation in the f In the theatre of consciousness. Global Workspace Theory, A Rigorous Scientific Theory of Consciousness. Bernard J. Baars, The Wright Institute, 2728 Durant Ave., Berkeley, California 94704, USA. 1 The easiest introduction is In the Theater of Consciousness: The Workspace of the Mind (Baars, 1997). The most complete technical exposition is in Baars (1988). Papers since 1988 are cited in the References. 293 b.j. baars. I: Introduction. Growth of ethnic self-consciousness of the Russian people in the conditions of a modern paradigm of a social development is characterized by a number of features which are also shown in cultural and educational life spheres. The place of our national culture and its ethno pedagogical orientation changes together with the changes of social, economic and ideological situation and the ethnographic picture of our life. Self-consciousness formation passes several stages correlating with the main mental development stages and the ones of ethnic identity formation. In the process ethnic self-consciousness is formed a little later than other forms of self-consciousness. Three main stages of ethnic self-consciousness development are marked out (5, p. 80-88). Can a machine be conscious. The words “mind” and “consciousness” are used by different communities in different ways. Is consciousness, essentially, an emergent property of intelligence? This would make sense, as we can say that a dog is more conscious than a chicken, which is more conscious than an ant. Some new age thinkers describe consciousness as an “invisible, energetic fluid that permeates life and the mind.” This thinking follows the same vein as a soul, spirit, or some other otherworldly, ethereal part of a person that makes them more than a piece of flesh. But, to consider this possibility, we again visit the problem of binary consciousness.